



Serial Interface CardSlides

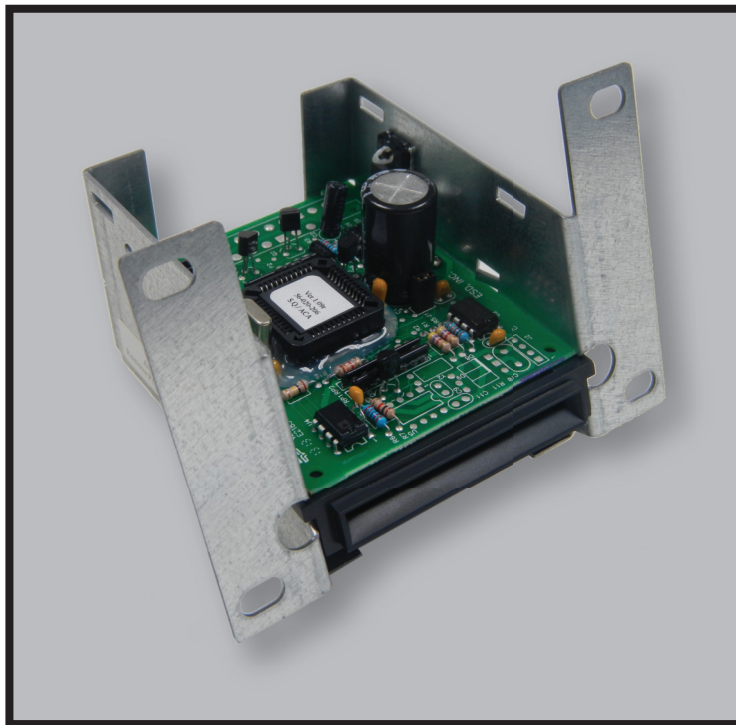
Two Types of SmartCard CardSlides that are Designed for Card Ready Machines

The serial interface CardSlide was designed specifically to communicate with the washer or dryer controls at a higher level protocol. It will read the smart chip on an inserted SmartCard and validate the site code, read the balance on the card and if sufficient funds are available it will start the washer or dryer while deducting the cost from the remaining balance on the card. It does not have a display, it uses the display on the machine; it is mounted internally with only the card guide exposed to the outside.

The BlueFace CardSlide functions like the Serial CardSlide, but it is designed to fit into the coin drop or money box opening, like the Ruby, on any coin, or prepped for coin machine.



Serial Interface SmartCard Readers — 11-000-XXX



SmartCard Readers Benefits:

- ✓ Durable Construction
- ✓ Plug and Play Interface
- ✓ No Moving Parts
- ✓ Stand Alone Operation
- ✓ Specific readers available for all serial interface brands



UL Listed to the U.S. and Canadian Safety Standards. Prices and Specifications Are Subject to Change Without Notice.



Serial Interface CardSlides

Product Specifications

Exterior Dimensions	3" high x 3" wide x 3.5" deep
Certified	UL listed to US and Canadian safety standards
Electrical Requirements	12 vdc
Display	Large Bright LED Display



Adapter plates may be required, and are available for certain machines that make the installation of an ESD CardSlide fast and simple.



UL Listed to the U.S. and
Canadian Safety Standards.

Prices and Specifications

Are Subject to Change Without Notice.

ESD Electronic Payment Systems



Payment Systems For the World

© ESD ALL RIGHTS RESERVED — — Part Number 11-400-148

270 Commerce Drive, Suite 101, Ft. Washington, PA 19034

Tel: 215.628.0860 • Toll Free in the U.S. and Canada: 800.523.1510

Toll Free Fax in the U.S. and Canada: 800.548.1638

Email: info@esdcard.com



Website: esdcard.com